

# R2iOS<sup>®</sup> Intra-Oral Scanner

The First Step to Digital Dentistry with R2iOS<sup>®</sup>



**MegaGen  
Digital  
Dentistry**

# Why should you choose MegaGen R2iOS' ?

R2iOS is the most optimal internal oral scanner for users, MegaGen aims for the global No.1 digital dentistry.

R2iOS intraoral scanner has fast and easy image capturing technology, which can provide reliable, accurate & complete data for digital dental impression. Providing patients with a comfortable and efficient treatment experience, our scanners make it easier for dentists to diagnose and communicate with patients. R2iOS scanner is an open system scanner, which provides the access to the latest technology equipment available in the market. It has a range of applications which includes digital restoration, digital orthodontics, navigation template of digital implant, etc.

## R2iOS Features



### Impressive speed

- By applying the A.I Scan Detection algorithm, unnecessary areas (tongue, cheeks) are automatically removed, and the scan is consistently performed without being greatly influenced by distance and angle.
- Refining time of the scan is quick, it shortens the entire scanning time.
  - \* Full-Arch Scan Time : 3~5 mins



### Accuracy

- Optical continuous video collection technology using high quality light source without radiation and 3D color scan can get real color & real imaging.
- It automatically obtains accurate occlusion of the patient's maxilla and mandible.
- You can determine whether to scan correctly through the scanned image color.
  - \* correct: actual scan object color / incorrect: gray



### Convenient UI

- Intuitive UI makes easy and convenient to use even for the beginners.



### High Efficiency

- R2iOS is made for you who are hesitant to buy because of its high price. Try it out! Compared to the best products in the world, you will see that there is no shortage.





### Powderless

- R2iOS does not require the use of powder for regular cases, making the scanning process more seamless and the experience gives more pleasant to the patient.
- \* Some metals do not require powder, but all metals may require spraying.



### Excellent Compatibility

- R2iOS uses an open CAD/CAM system, allowing you to export STL, PLY, OBJ files. These files are fully compatible with Dental CAD software such as R2CAD, 3shape, exocad, Dentalwings. You can also use with any milling machine and any 3D printer.



### Anti Foggy Technology

- Dual heating options from internal & external heat maintain the temperature of the scanner to prevent it from fogging.



### Optimal Size & Autoclavable Tip

- Streamlined heads make easy to reach to posteriors. Scanner heads are autoclavable and usable for multiple times.



### No S/W Annual Fee

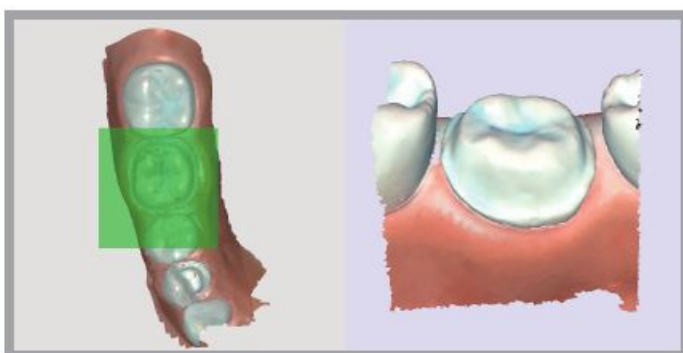
- Reduce customer burden on use.

## R2iOS Core Function



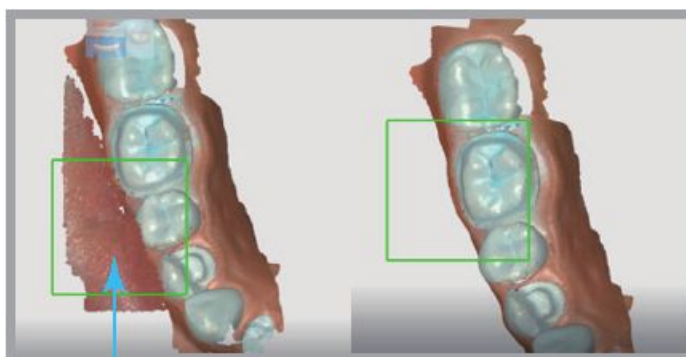
### 1 Preview of refine result

You can check the preview of scan whether it is scanned precisely; this takes only three seconds to verify.



### 2 Apply AI Filter

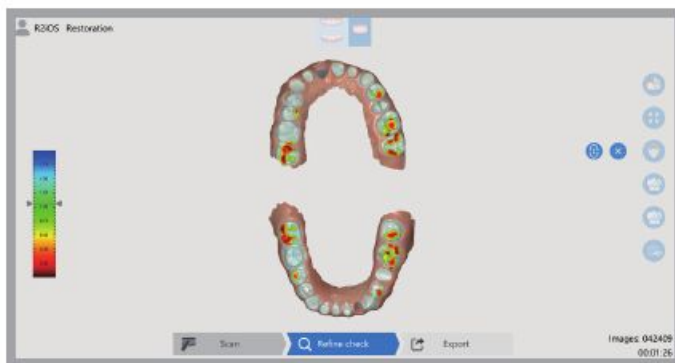
Improves accuracy by automatically detecting and deleting unnecessary parts during scanning



Unnecessary part

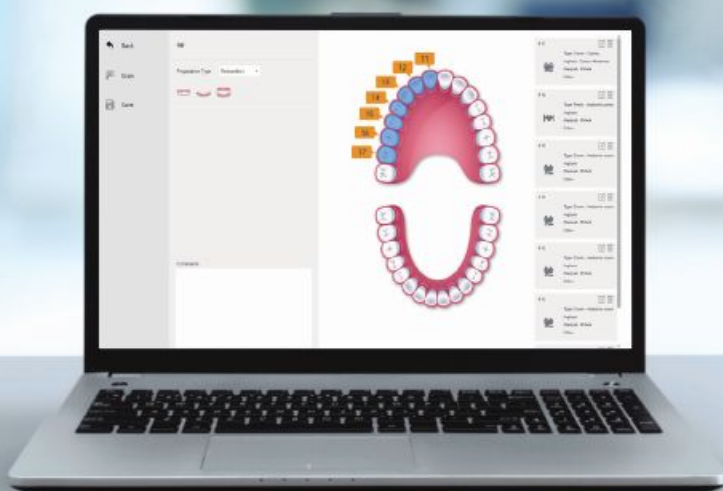
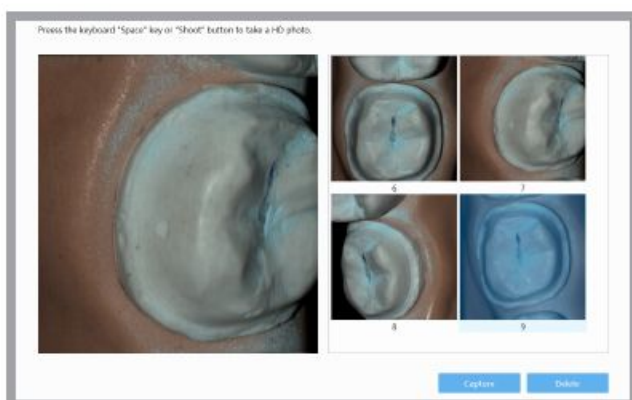
### 3 Occlusal analysis and adjustment

Patient occlusal relationship is colored to enable analysis and can be modified as needed.



### 4 HD Photo

Storing pictures of the oral cavity can be used efficiently during patient consultation



# Non-stop solution of digital dentistry

## 200% utilization of R2iOS\*

R2iOS is the most optimal internal oral scanner for R2 Solutions.  
Maximize benefits & cost effectivity with R2 international service.

### Digital Equipment



R2 STUDIO



R2iOS

### 3D Imaging



NEXT Unit Chair

### Materials



Scan Healing Abutment

### Consumer Value

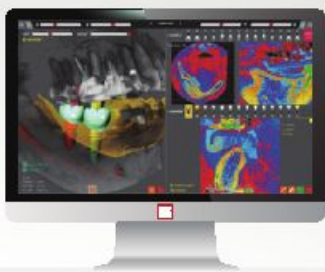


R2GATE Guide

Ti. CUSTUM

Provisional

**Tx.Planning & Design**



**R2GATE**

**In-lab Equipment**



**MEG-PRINTER**



**Ti CAM**



**WHITE CAM**



**Surgical Kit**



**R2 Package**



**Resin**



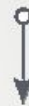
**TiGEN**



**ZrGEN**



**R2ICE Zirconia Block**



**R2GATE Guide surgery & One-Day Implant**



**R2GATE Guide**



**Ti. CUSTUM**



**Zr. CUSTUM**



**Provisional**



**Prosthesis**

## Technical Data

| R2iOS <sup>®</sup>       |                                     |                    |                      |
|--------------------------|-------------------------------------|--------------------|----------------------|
| Accuracy                 | 20um                                | Export File        | STL, PLY, OBJ        |
| Scanning Distance        | 0-17mm                              | Scanner Size       | 240 x 49.5 x 30.5mm  |
| Scanner Weight           | 210g (World Best)                   | Operating Time     | >30000hrs            |
| Image Capture Technology | Optical continuous video collection | Imaging Mode       | Synchronous 3D video |
|                          |                                     | Quick Reset        | YES                  |
|                          |                                     | Model Optimization | YES                  |

## Recommend Computer Specification

| R2iOS <sup>®</sup> |   |                    |  |
|--------------------|---|--------------------|--|
| CPU Laptop         | Intel Core i7-8750U or higher                         | System             | WINDOWS 10 Home edition/<br>Professional edition/Corporate edition |
| Graphics Card      | NVIDIA GeForce1060 6g or higher                       | Monitor Resolution | 1920x1080  |
| Memory             | More than 16G   | Port               | USB/3.0  |
| Hard Disk          | More than 256G SSD<br>or 128G+1T mechanical hard disk | Supply Voltage     | 110V~240V,50Hz   |
|                    |   | Power Consumption  | 25VA   |